

Intosite

Extending collaboration between functions within a company, factory and across factories for increased productivity through quick and natural access to production information using a digital twin

Benefits

- Improves efficiency of production enterprises by facilitating navigation of factories, assets and related information
- Extends collaboration between different functions within a company, factory and across factories
- Increases productivity by giving quick and natural access to a variety of production and quality information
- Improves process planning by enabling central engineering to virtually understand the factory context, leveraging as-built know-how for future planning
- Streamlines ramp-up of new production processes by enabling early sharing of new process studies and documents, making it available to worldwide factory personnel
- Promotes knowledge and standardization by allowing sharing of local best practices across the organization

Summary

Intosite™ in the Tecnomatix® portfolio is a cloud-based web application that provides a 2D/3D/panoramic representation of a production facility, presented in its geographical context, allowing you to navigate through the facility in the simple and familiar way you navigate Google Maps™.

Intosite provides simple, intuitive access to information from any IT system. You can view manufacturing and facilities information managing by Teamcenter software and information technology (IT) sources.

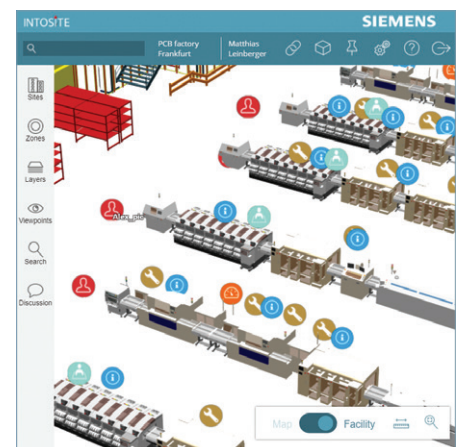
Intosite provides a product lifecycle management (PLM) smart connected map for manufacturing enterprises. It facilitates a virtual tour of your facilities using rich visualization techniques, with the ability to get relevant information by simply clicking on visual tags that are connected to PLM and other IT sources.

It allows people to access, author and interact on manufacturing issues in the context of their factory location and by leveraging connected information. It fosters collaboration, standardization and sharing of manufacturing knowledge.

Intosite deploys as a software as a service (SaaS) application, meaning Siemens Digital Industries Software hosts the application and the associated data on the cloud, and customers can access the application via a web browser. So customers do not need to invest in hardware or handle application installation, maintenance and support.

Connect PLM information to the factory

You can share information, such as future plans, studies and reports, between departments and enable more collaboration and cooperation. Using Intosite helps you harness the wisdom of crowds by allowing people in the field, as well as in factories, to share their best practices, tips and tricks and comment on data posted by central planning.



Electronics manufacturing facility in Intosite.

Intosite

Features

- Navigation of production facilities, leveraging worldwide map, 2D facility layout, lightweight 3D representation and panoramic images
- Creation and sharing of visual tags (placemarks) on the Intosite map that leads to information such as URLs, files or configured data from IT systems
- Organization of visual tags with a layering scheme that conforms with the business logic of your company
- Advanced search for placemarks, addresses and geographical coordinates
- Simple access to information from Teamcenter, MindSphere, SharePoint, .NET applications and other IT systems
- Discussion panel about information uploaded to Intosite with chat functionality and email alerts
- Variable visual tags (status place-marks) connected to dynamic events from machine status or planning checklists for production readiness

Use Intosite to represent existing and new factories

Factory employees can enjoy simple and intuitive access to up-to-date digital manufacturing and production information from the shop floor, including:

- Monitoring systems
- Machine information, including movies
- Maintenance information
- Station performance analytics as well as station capacity and constraints
- Equipment setup instructions or visual aids
- Live information from planning checklists or machine status

Use Intosite to virtually represent new production facilities before they are operational and to gather feedback on the building progress, new design or to train employees.

Manage Information about Assets and Systems

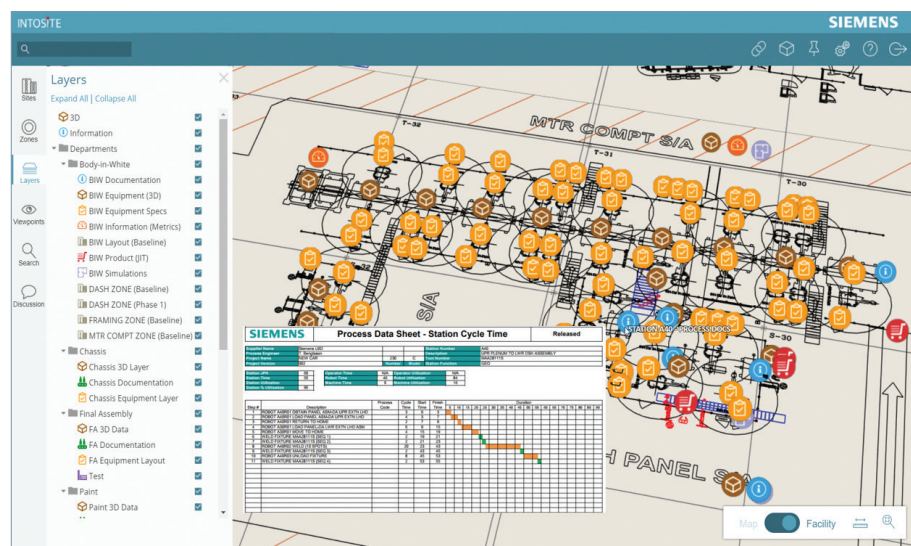
Using Intosite, you can visually plan maintenance operations globally and remotely, even for assets that reside in hard to access locations. Having location based information helps to

understand the exact status of the plant and its facilities. At any virtual facility location engineers or other team members can add visual tags to the 3D facility representations in Intosite - just as they would in Google Maps - and upload/download content such as videos, documents and images to these visual tags.

Through its unique, visually-oriented and straightforward interface, Intosite supports effective maintenance planning and service execution activities helping to eliminate faults and damages. Engineers and planners can check various aspects of their plan, including ramp-up scenarios, production readiness, maintainability and support.

System requirements

- Browsers: Chrome, Firefox®, Edge



Automotive assembly line in Intosite with visual tags for station description, process data and status information.

Siemens Digital Industries Software
[siemens.com/software](https://www.siemens.com/software)

Americas +1 314 264 8499
 Europe +44 (0) 1276 413200
 Asia-Pacific +852 2230 3333

© 2018 Siemens. A list of relevant Siemens trademarks can be found [here](#). Other trademarks belong to their respective owners.

36998-C44 2/18 H